

### Features

- Graphical Representation of Entire ADVANCE / SmartSeries™ system
- Real-time Notification of System Status and Faults
- Clear, User-Friendly Format
- Supports 1 to 20 Remote View Nodes

ADVANCE/SmartSeries systems typically display system fault and status messages on an Access Panel, or save them into a log file. Now those who prefer a more flexible PC-based environment can use GAI-Tronics' Portal Graphical User Interface (GUI) software.

GAI-Tronics' Portal viewer, together with the included Server system interrogation software provides real-time information about the ADVANCE system in a user-friendly graphical format. Faults and system status information are clearly displayed, simplifying system troubleshooting and allowing easy identification of system events such as pages or alarm activation.

### Part numbers

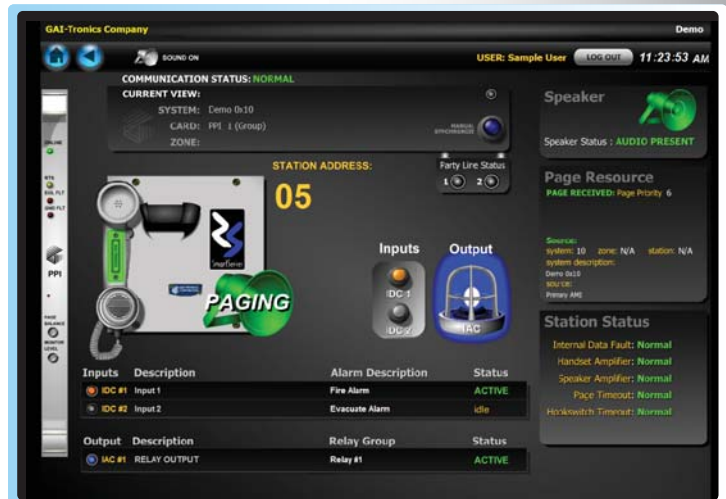
- 12509-200 – Portal/Server – 1 user
- 12509-201 – Portal/Server – 5 users
- 12509-202 – Portal/Server – 10 users
- 12509-203 – Portal/Server – 20 users

### Minimum System Requirements a dedicated PC with the following:

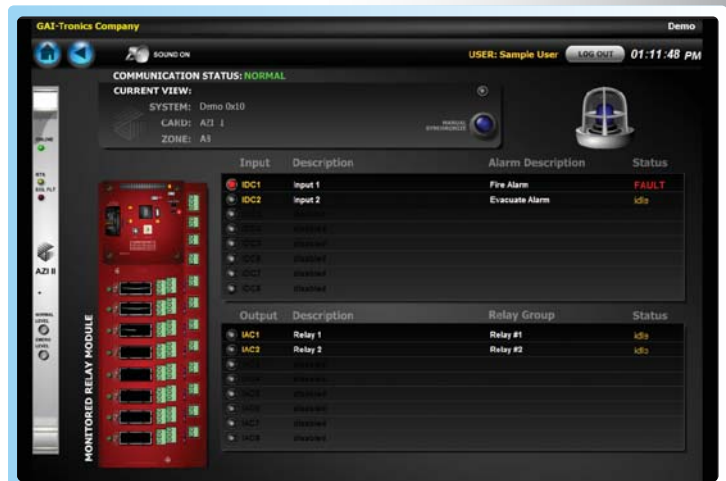
- Intel® Pentium® 4 2GHz or faster processor (or equivalent)
- Windows XP
- 512MB of RAM
- 20MB free hard drive space



**System View - Healthy and no status messages**



**SmartSeries RTU Station View:**  
Healthy with paging and active input/output



**Monitored Relay Module View:**  
Fault shown on monitored input 1